



CONFIDENTIAL

THIS DOCUMENT AND INFORMATION CONTAINED HEREIN IS PROPRIETARY AND CONFIDENTIAL TO PRECOR STRENGTH INCORPORATED. RECIPIENTS OF THIS DOCUMENT AGREE THAT THIS DOCUMENT AND INFORMATION WILL NOT BE USED FOR ANY PURPOSE, REPRODUCED OR COPIED, OR DISCLOSED TO ANY THIRD PARTY, EITHER IN WHOLE OR IN PART WITHOUT PRIOR EXPRESS WRITTEN PERMISSION OF PRECOR STRENGTH, INCORPORATED.

PRECOR USA
PRECOR STRENGTH, INC.

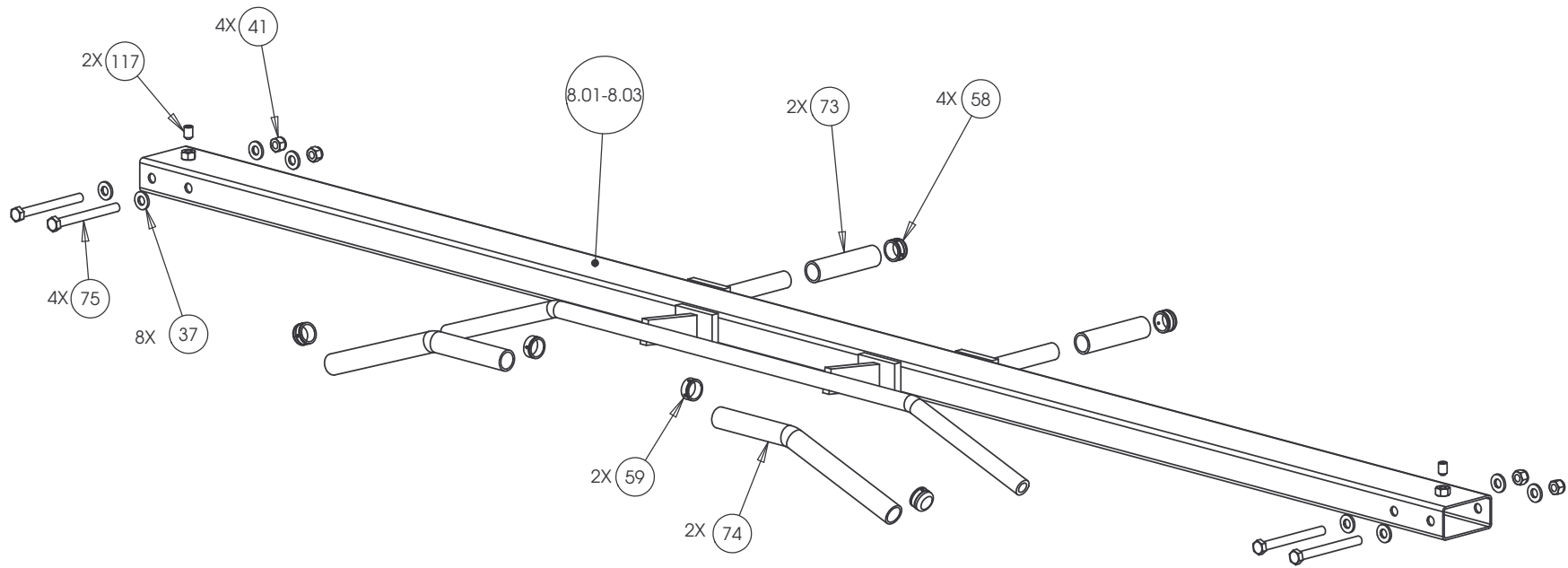
28936 AVE WILLIAMS
VALENCIA, CA 91355
TELEPHONE: 661-362-0300

| | | |
|--------------------------------|----------|-----|
| SIGN IN BLUE OR BLACK INK ONLY | | |
| DRWN BY | 01.02.07 | MGP |
| DWG CHK | | |
| ENG | 01.02.07 | RSG |
| MPG ENG | | |
| CS | | |
| QA | | |
| ID | | |
| REG | | |

UNLESS OTHERWISE SPECIFIED:
DIMENSIONS ARE IN INCHES
TOLERANCES ARE:
LIN .X=±0.1 .XXX=±0.010
LIN .XX=±0.02 .XXXX=±0.0001
ANGULAR: ±1.0°
ALL DIMS AFTER PLATING
BREAK ALL SHARP EDGES
REMOVE ALL BURRS
ALL ANGLES & BENDS 90°
DWG PER ASME Y14.5M-1994
DO NOT SCALE DRAWING
ALL MACHINED SURFACES

| | | |
|--|-------------|----------|
| PRODUCT: | | STRENGTH |
| ASSEMBLY CONNECTION, 10.5, W/ 1 PULLEY HSG | | |
| DWG. NO. | CW31868-402 | SUBREV |
| | | A |

| | | |
|------|------|----|
| SIZE | PAGE | OF |
| C | 1 | 1 |



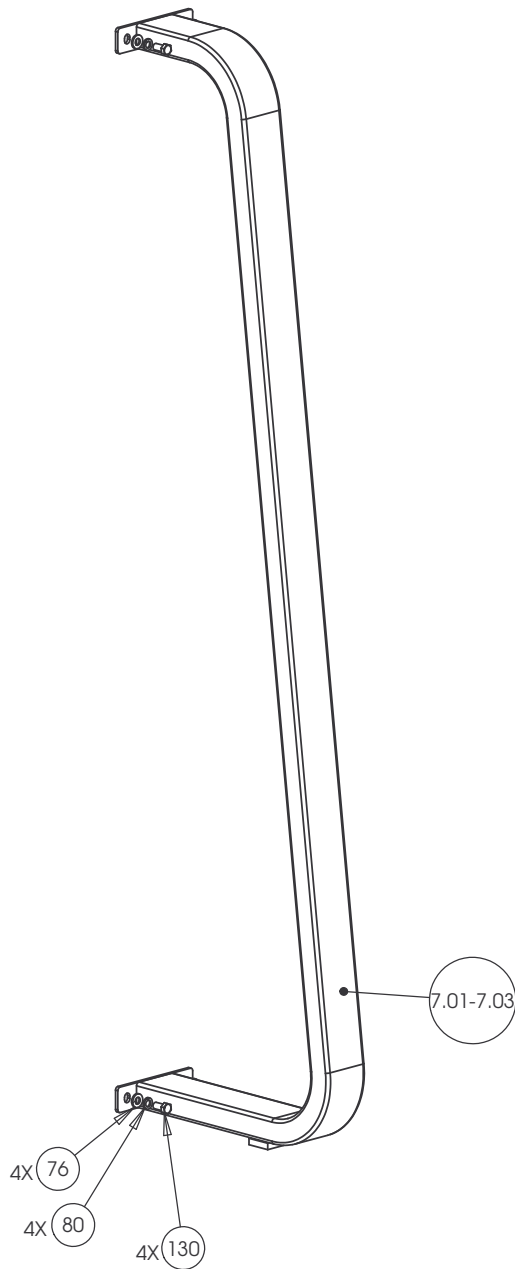
CONFIDENTIAL

THIS DOCUMENT AND INFORMATION CONTAINED HEREIN IS PROPRIETARY AND CONFIDENTIAL TO PRECOR STRENGTH INCORPORATED. RECIPIENTS OF THIS DOCUMENT AGREE THAT THIS DOCUMENT AND INFORMATION WILL NOT BE USED FOR ANY PURPOSE, REPRODUCED OR COPIED, OR DISCLOSED TO ANY THIRD PARTY, EITHER IN WHOLE OR IN PART WITHOUT PRIOR EXPRESS WRITTEN PERMISSION OF PRECOR STRENGTH, INCORPORATED.

PRECOR USA
PRECOR STRENGTH, INC.

28936 AVE WILLIAMS
VALENCIA, CA 91355
TELEPHONE: 661-362-0300

| | | | | | | | |
|--------------------------------|----------|-----|---|-----------|---------------|--|--|
| SIGN IN BLUE OR BLACK INK ONLY | | | UNLESS OTHERWISE SPECIFIED: DIMENSIONS ARE IN INCHES | | | PRODUCT: | |
| DRWN BY | 01.02.07 | MGP | TOLERANCES ARE: | | | STRENGTH | |
| DWG CHK | | | LIN | .X=±0.1 | .XXX=±0.010 | ASSEMBLY CONNECTION, 107 IN, CROSSBEAM W-HANDLES | |
| ENG | 01.02.07 | RSG | LIN | .XX=±0.02 | .XXXX=±0.0001 | | |
| MFV ENG | | | ANGULAR: ±1.0° | | | | |
| CS | | | ALL DIMS AFTER PLATING | | | | |
| QA | | | BREAK ALL SHARP EDGES | | | | |
| ID | | | REMOVE ALL BURRS | | | | |
| REG | | | ALL ANGLES & BENDS 90° | | | DWG. NO. | |
| | | | DWG PER ASME Y14.5M-1994 | | | CW31878-401 | |
| | | | DO NOT SCALE DRAWING | | | SUBREV | |
| | | | ALL MACHINED SURFACES | | | A | |
| | | | SIZE | PAGE | OF | | |
| | | | C | 1 | 1 | | |



CONFIDENTIAL

THIS DOCUMENT AND INFORMATION CONTAINED HEREIN IS PROPRIETARY AND CONFIDENTIAL TO PRECOR STRENGTH INCORPORATED. RECIPIENTS OF THIS DOCUMENT AGREE THAT THIS DOCUMENT AND INFORMATION WILL NOT BE USED FOR ANY PURPOSE, REPRODUCED OR COPIED, OR DISCLOSED TO ANY THIRD PARTY, EITHER IN WHOLE OR IN PART WITHOUT PRIOR EXPRESS WRITTEN PERMISSION OF PRECOR STRENGTH, INCORPORATED.

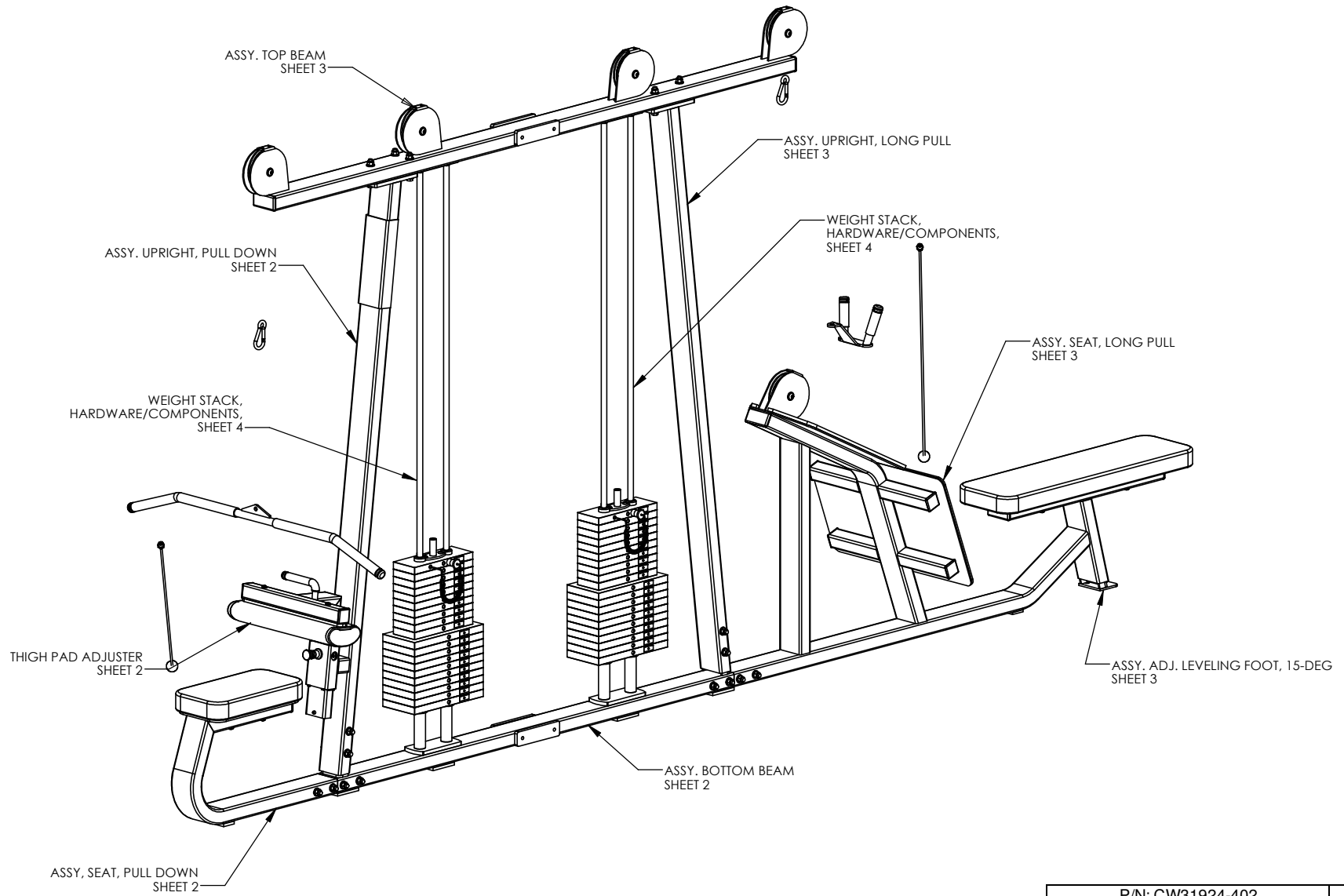
PRECOR USA
PRECOR STRENGTH, INC.

28936 AVE WILLIAMS
VALENCIA, CA 91355
TELEPHONE: 661-362-0300

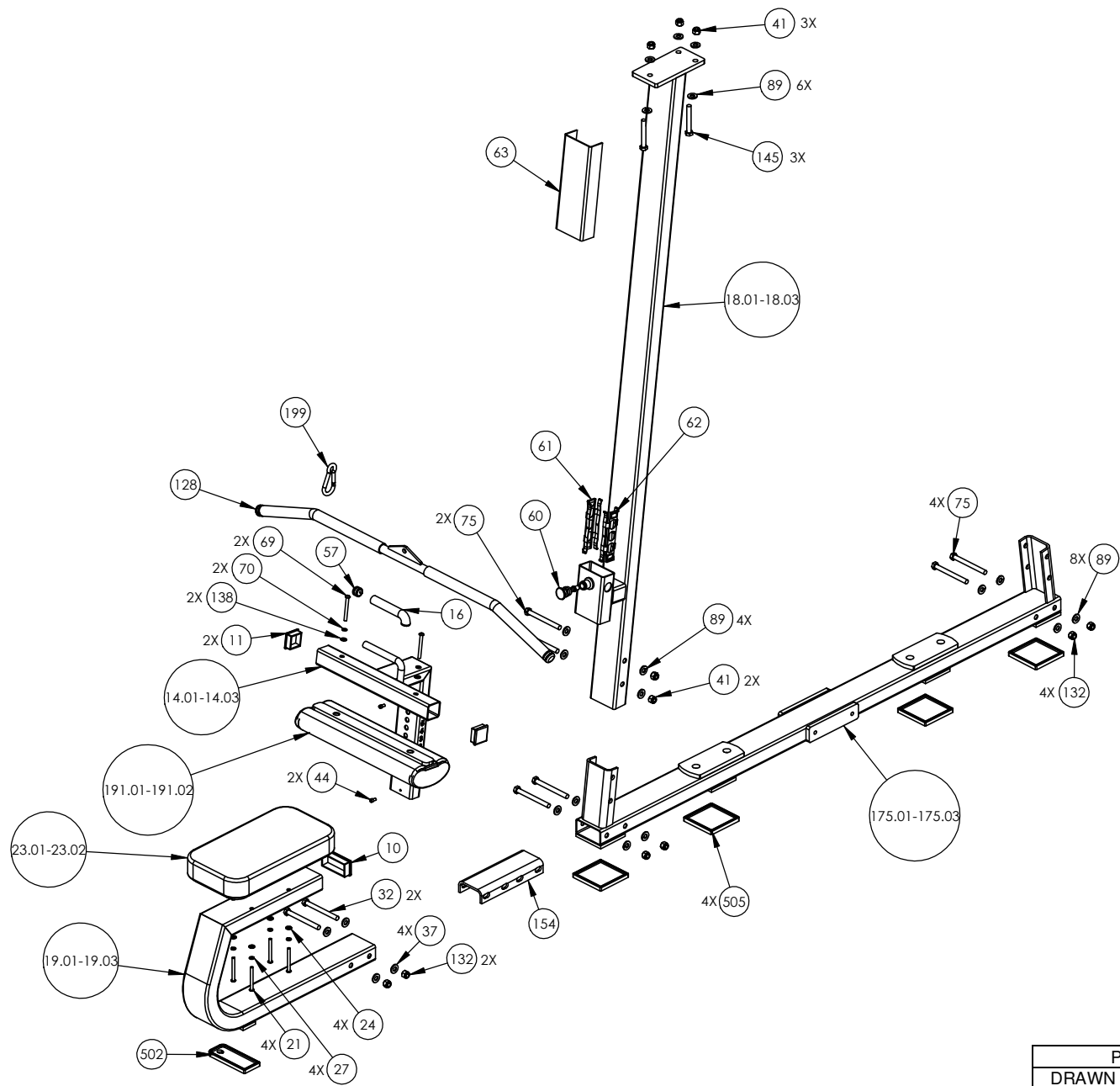
| | | | |
|--------------------------------|----------|---|-----------------------------|
| SIGN IN BLUE OR BLACK INK ONLY | | UNLESS OTHERWISE SPECIFIED: DIMENSIONS ARE IN INCHES | |
| DRWN BY | 01.02.07 | MGP | TOLERANCES ARE: |
| DWG CHK | | | LIN .X=±0.1 .XXX=±0.010 |
| ENG | 01.02.07 | RSG | LIN .XX=±0.02 .XXXX=±0.0001 |
| MFG ENG | | | ANGULAR: ±1.0° |
| CS | | | ALL DIMS AFTER PLATING |
| QA | | | BREAK ALL SHARP EDGES |
| ID | | | REMOVE ALL BURRS |
| REG | | | ALL ANGLES & BENDS 90° |
| | | | DWG PER ASME Y14.5M-1994 |
| | | | DO NOT SCALE DRAWING |
| | | | ALL MACHINED SURFACES |

| | |
|--|-------------|
| PRODUCT: | STRENGTH |
| ASSEMBLY FLANGED "C" FRAME, W/O PULLEY HSG | |
| DWG. NO. | CW31898-402 |
| SUBREV | A |

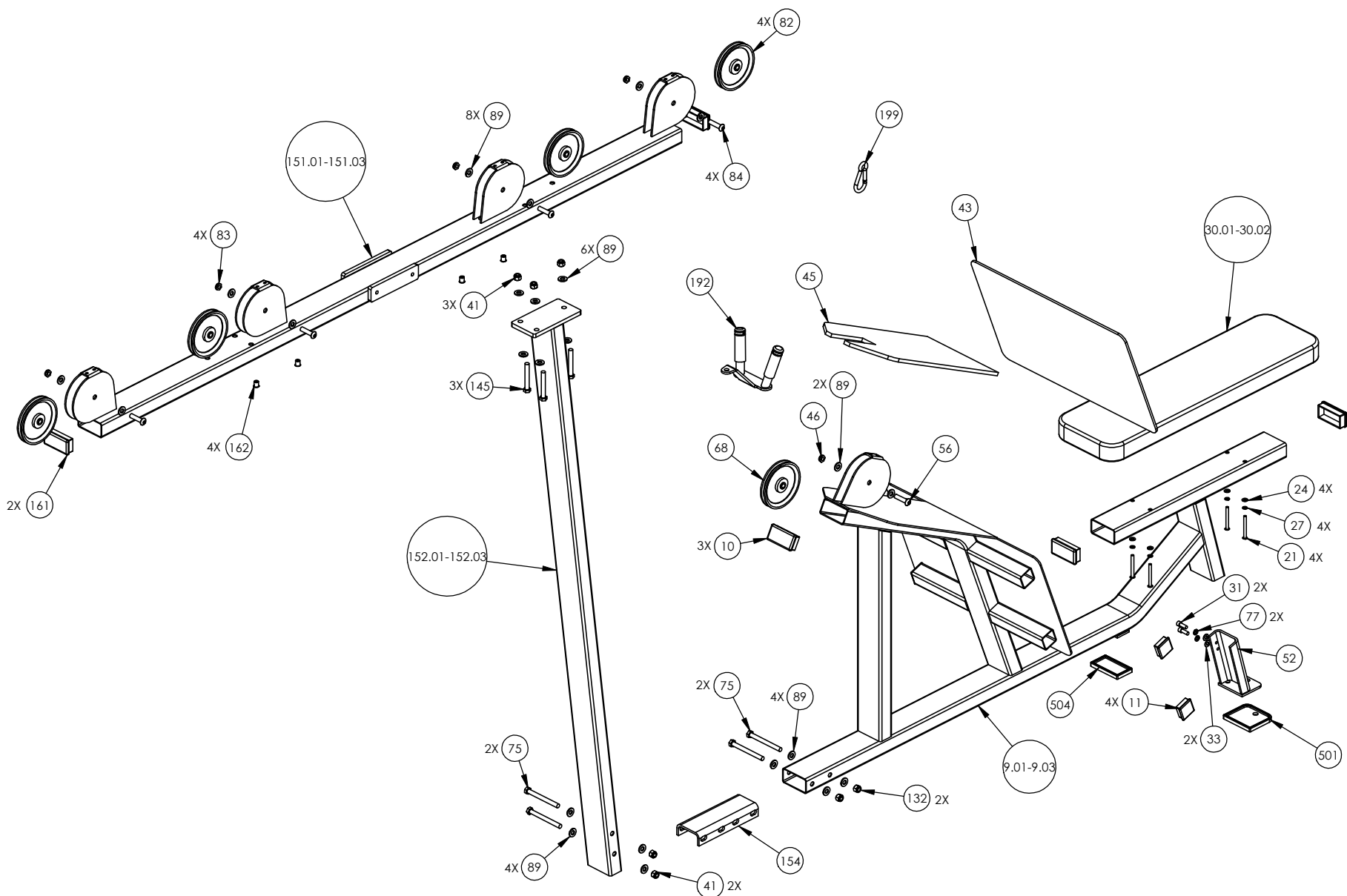
SIZE PAGE OF
C 1 1



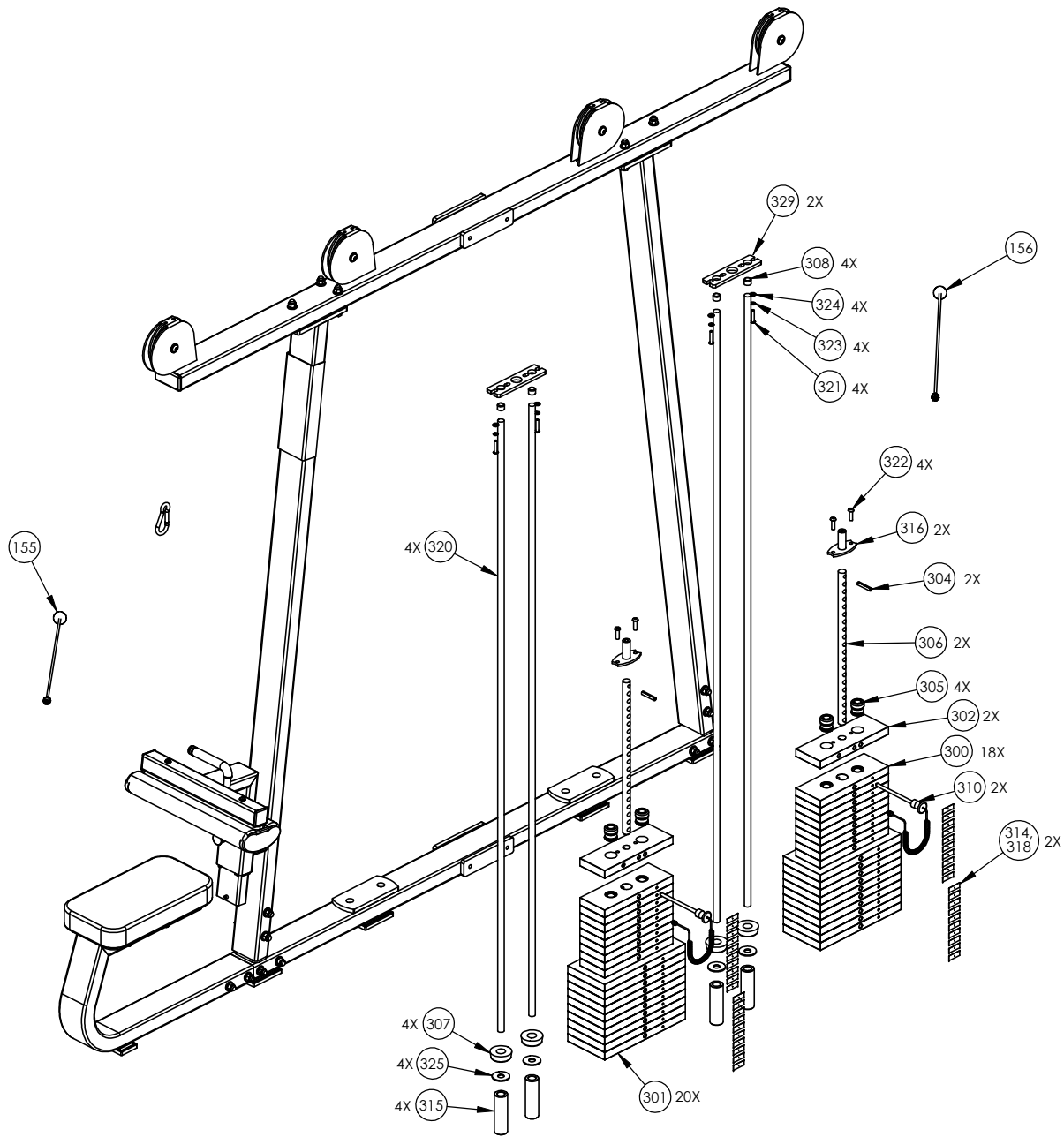
| | |
|------------------|----------------|
| P/N: CW31924-402 | SUBREV: C |
| DRAWN BY: JEC | DATE: 09.11.08 |
| SHEET 1 OF 4 | |



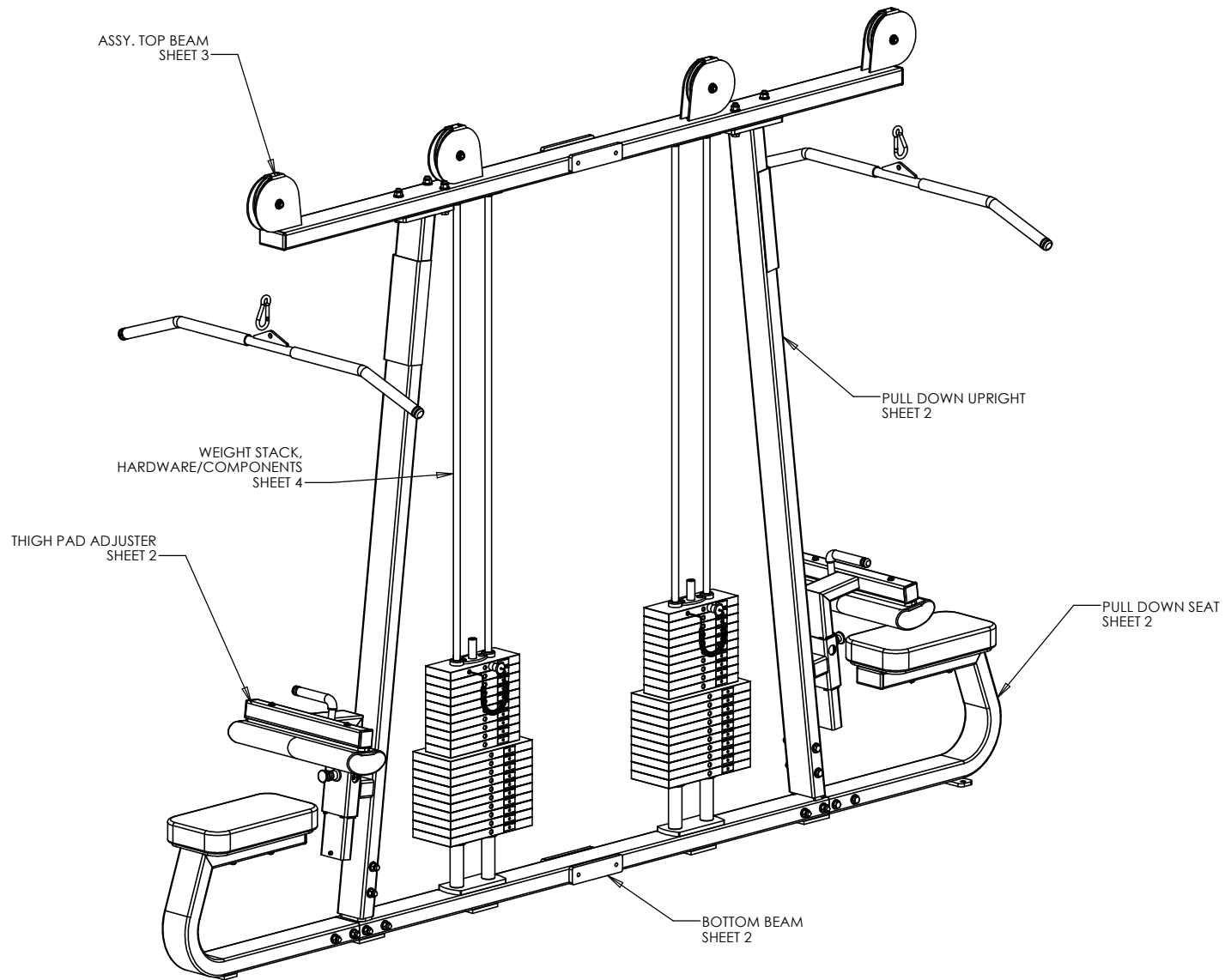
| | |
|------------------|-----------------------------|
| P/N: CW31924-402 | SUBREV: C |
| DRAWN BY: JEC | DATE: 09.11.08 SHEET 2 OF 4 |



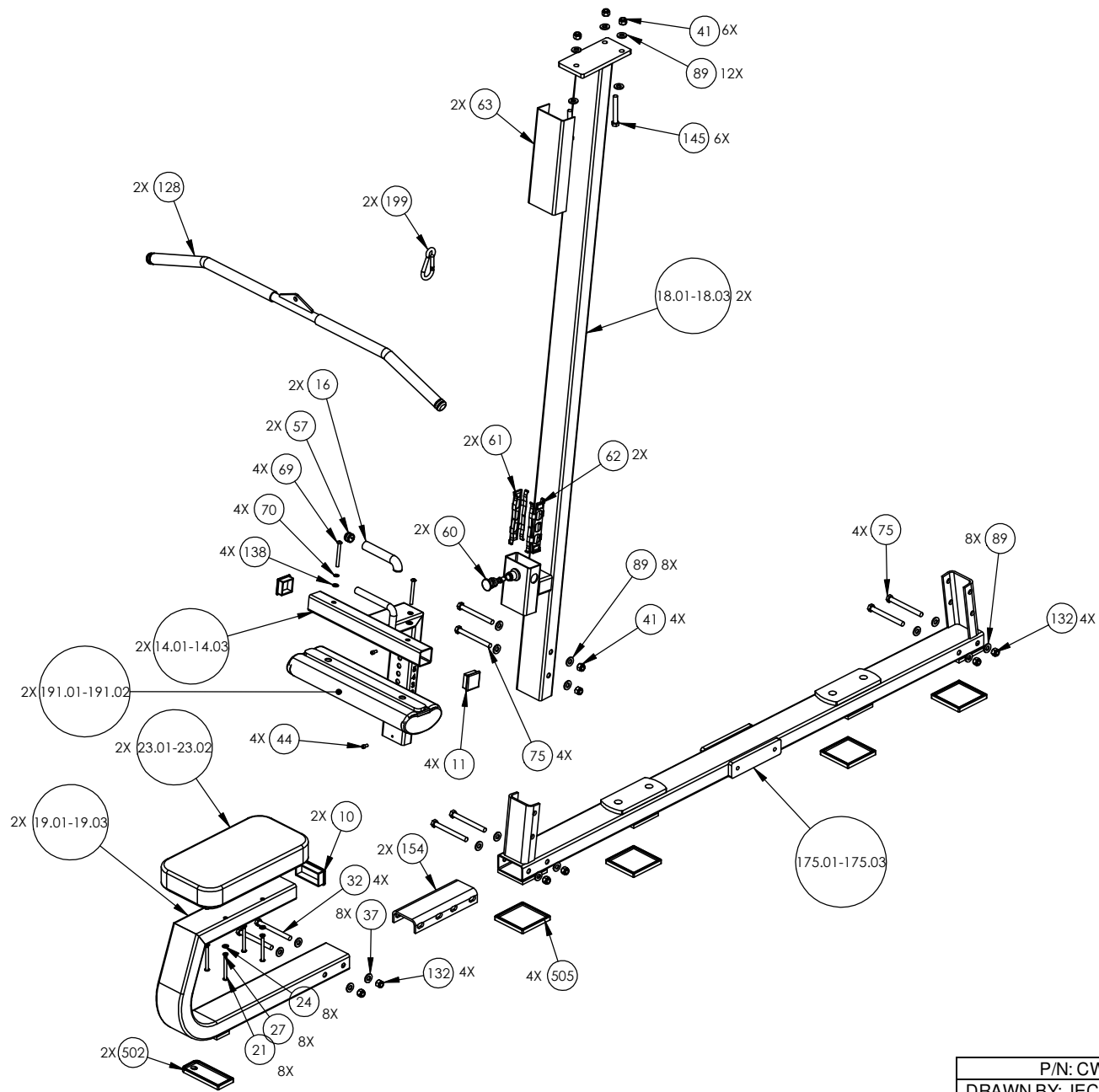
| | |
|------------------|----------------|
| P/N: CW31924-402 | SUBREV: C |
| DRAWN BY: JEC | DATE: 09.11.08 |
| SHEET 3 OF 4 | |



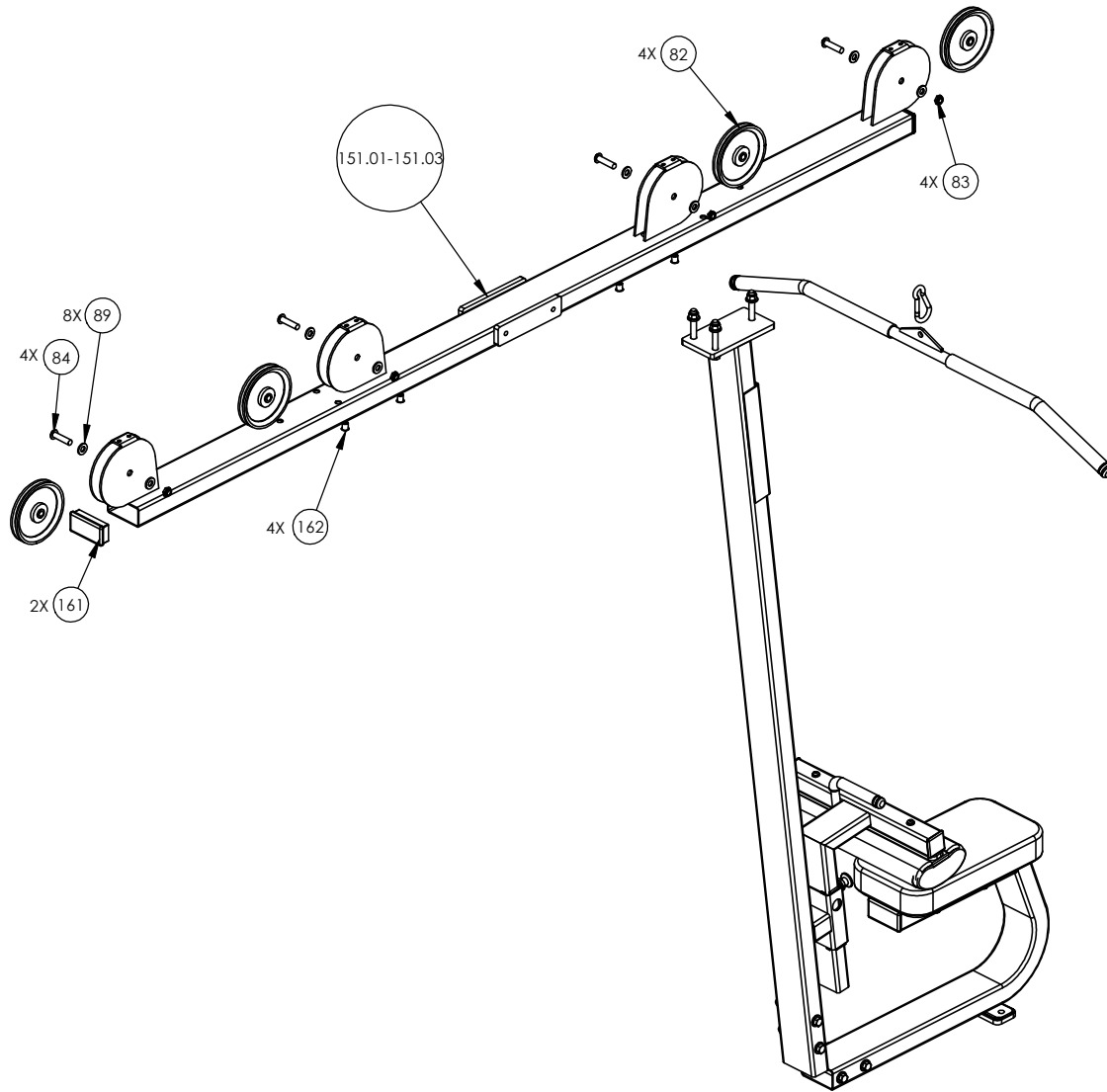
| | |
|------------------|----------------|
| P/N: CW31924-402 | SUBREV: C |
| DRAWN BY: JEC | DATE: 09.11.08 |
| | SHEET 4 OF 4 |



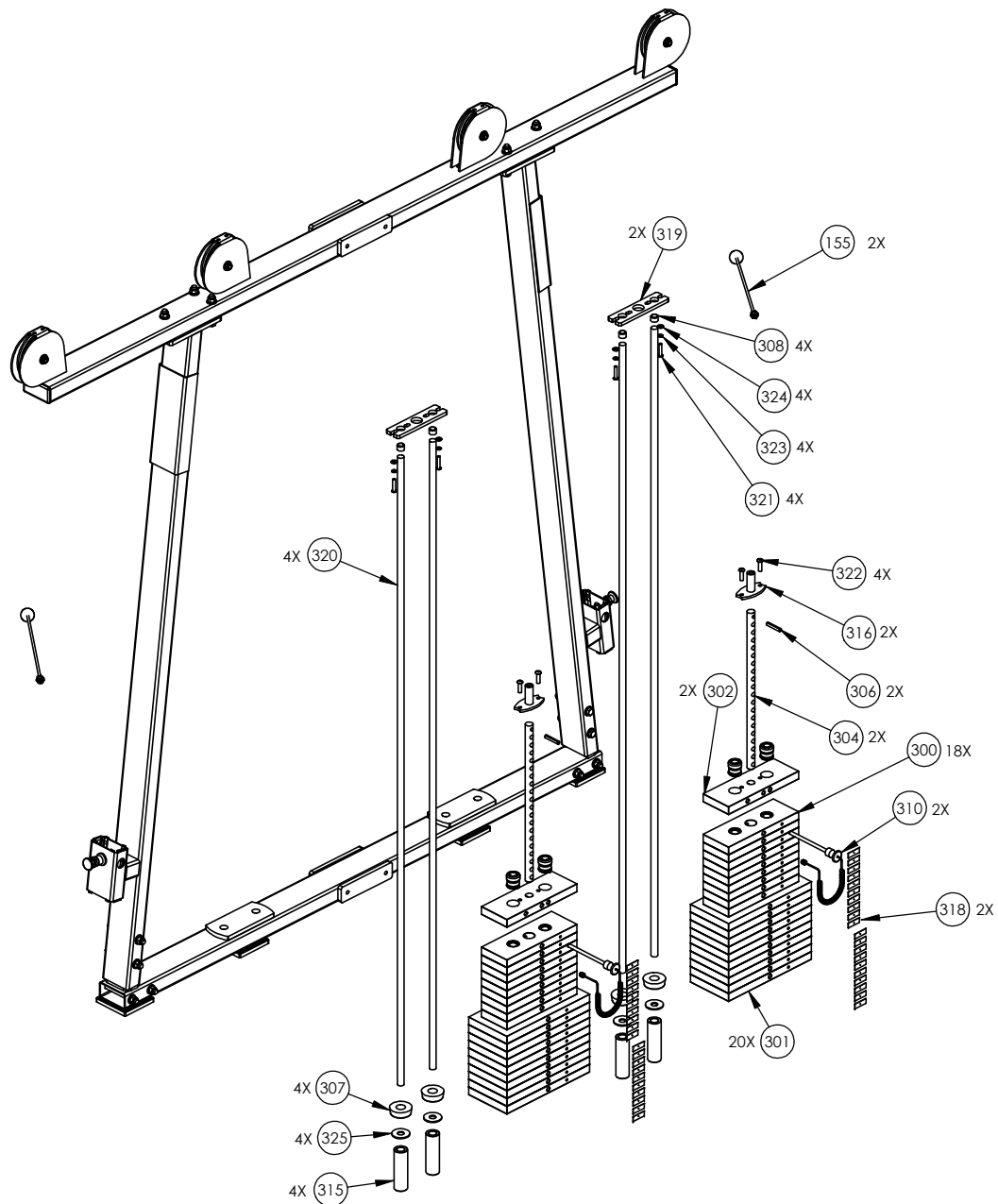
| | |
|------------------|----------------|
| P/N: CW31926-402 | SUBREV: C |
| DRAWN BY: JEC | DATE: 09.11.08 |
| SHEET 1 OF 4 | |



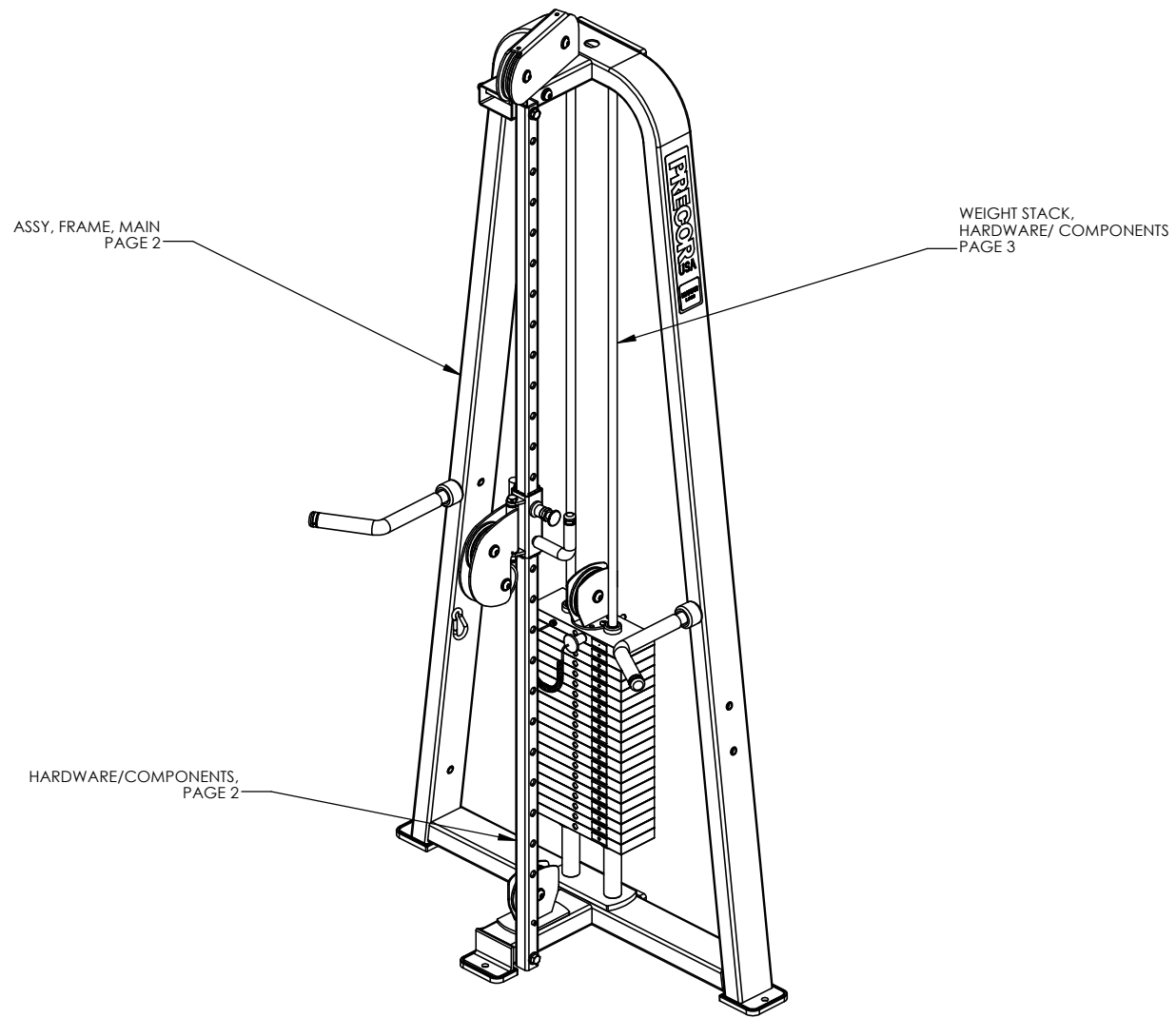
| | |
|------------------|----------------|
| P/N: CW31926-402 | SUBREV: C |
| DRAWN BY: JEC | DATE: 09.11.08 |
| SHEET 2 OF 4 | |



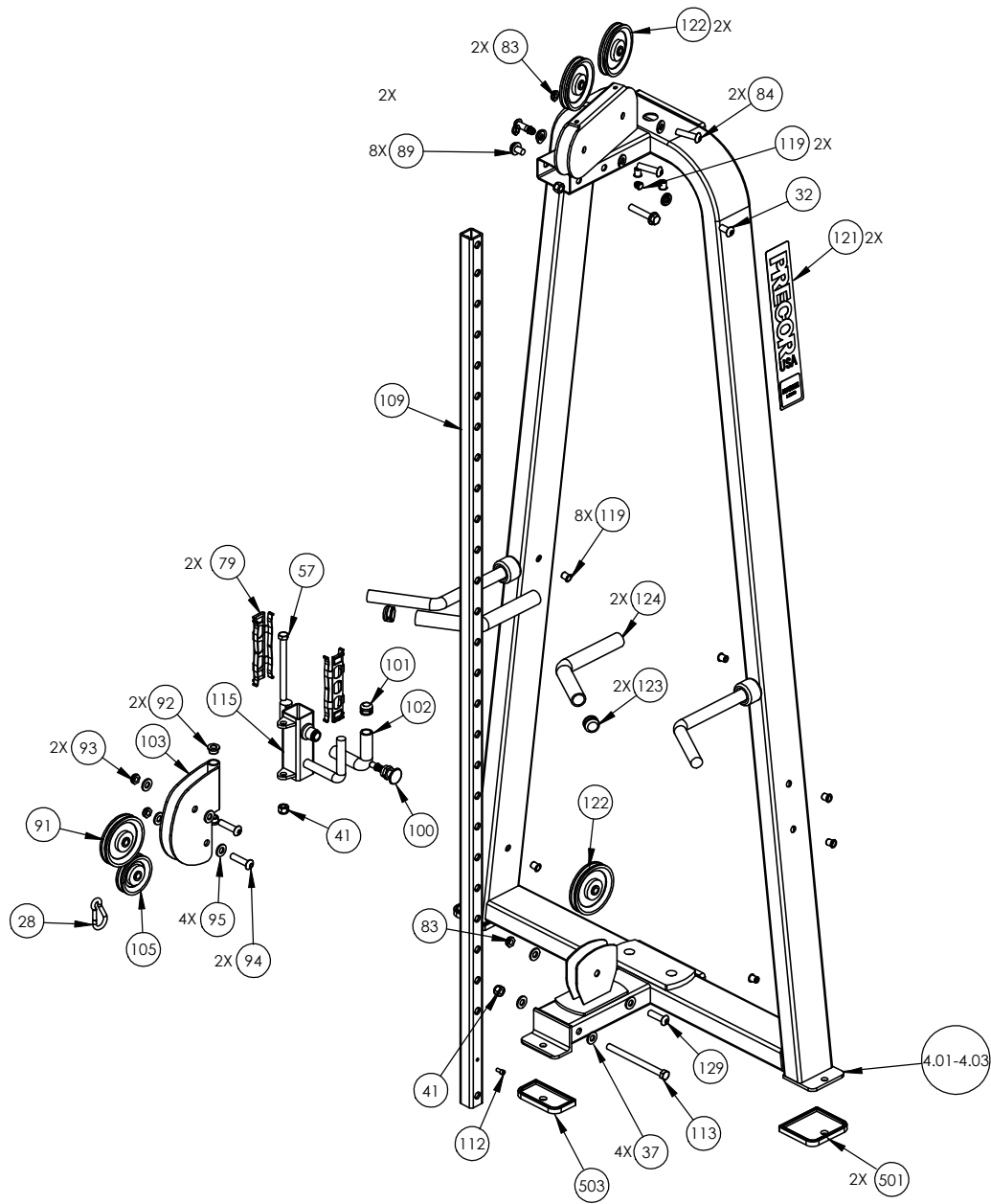
| | |
|------------------|-----------------------------|
| P/N: CW31926-402 | SUBREV: C |
| DRAWN BY: JEC | DATE: 09.11.08 SHEET 3 OF 4 |



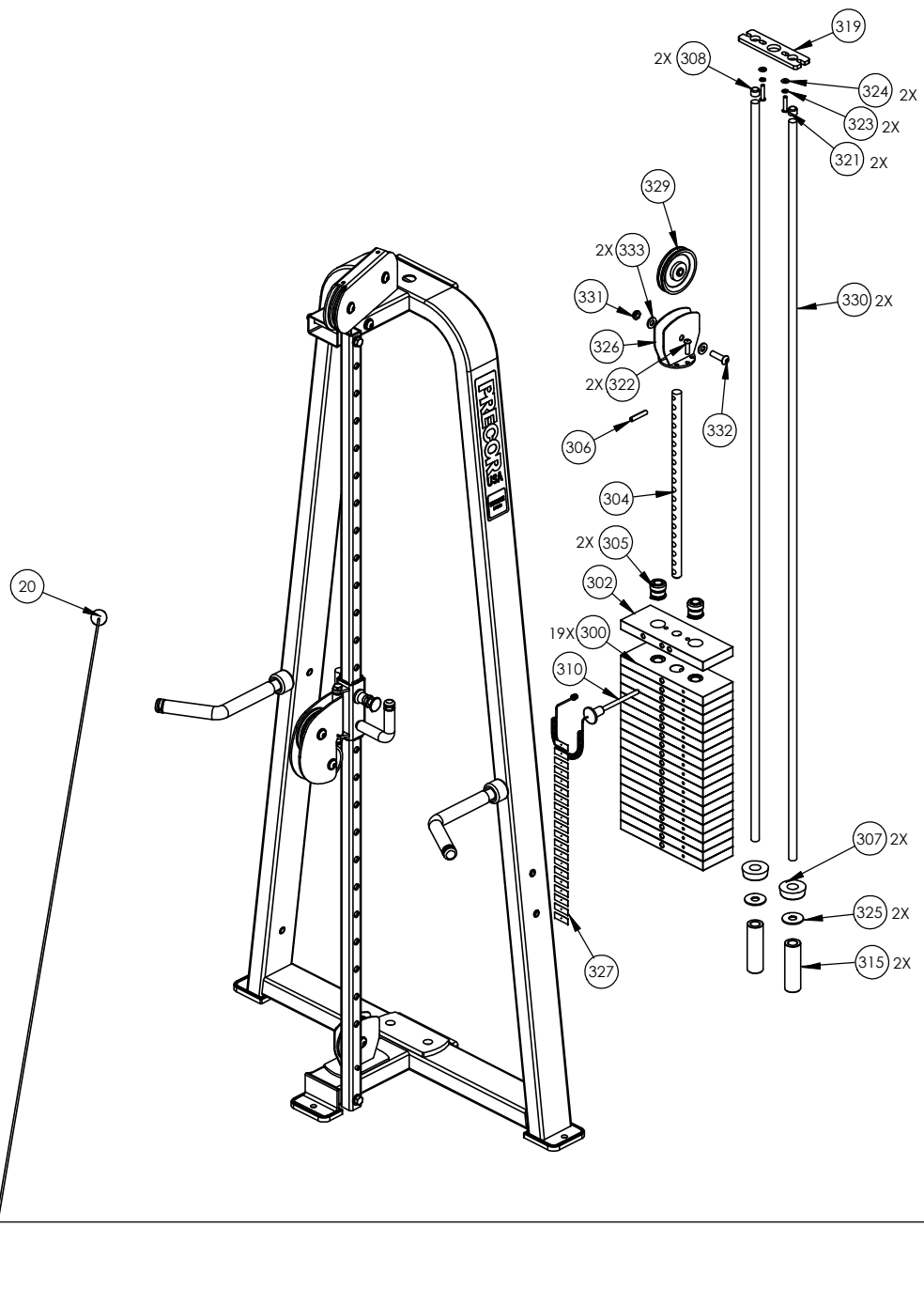
| | | |
|------------------|----------------|--------------|
| P/N: CW31926-402 | | SUBREV: C |
| DRAWN BY: JEC | DATE: 09.11.08 | SHEET 4 OF 4 |



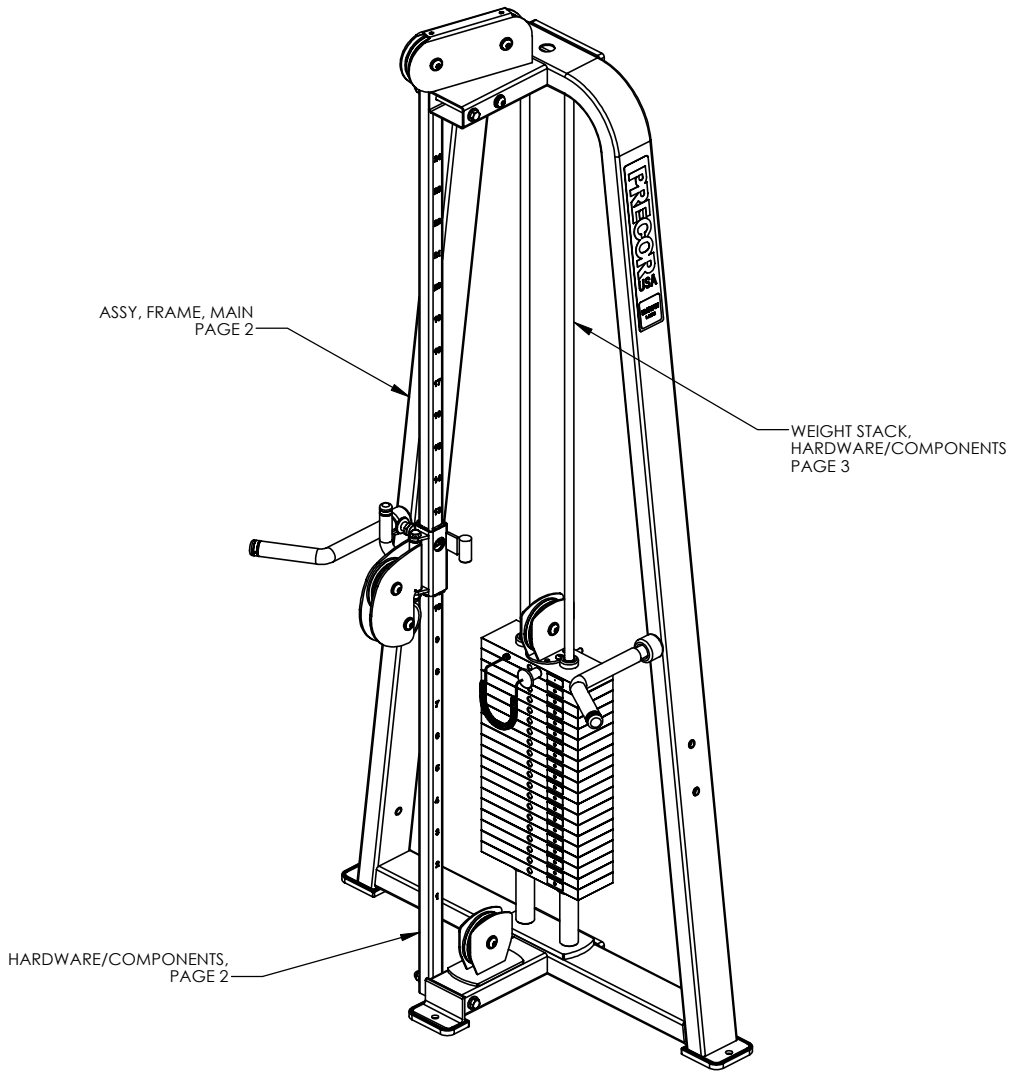
| | |
|------------------|----------------|
| P/N: CW34920-401 | SUBREV: A |
| DRAWN BY: VLE | DATE: 06.24.09 |
| SHEET 1 OF 3 | |



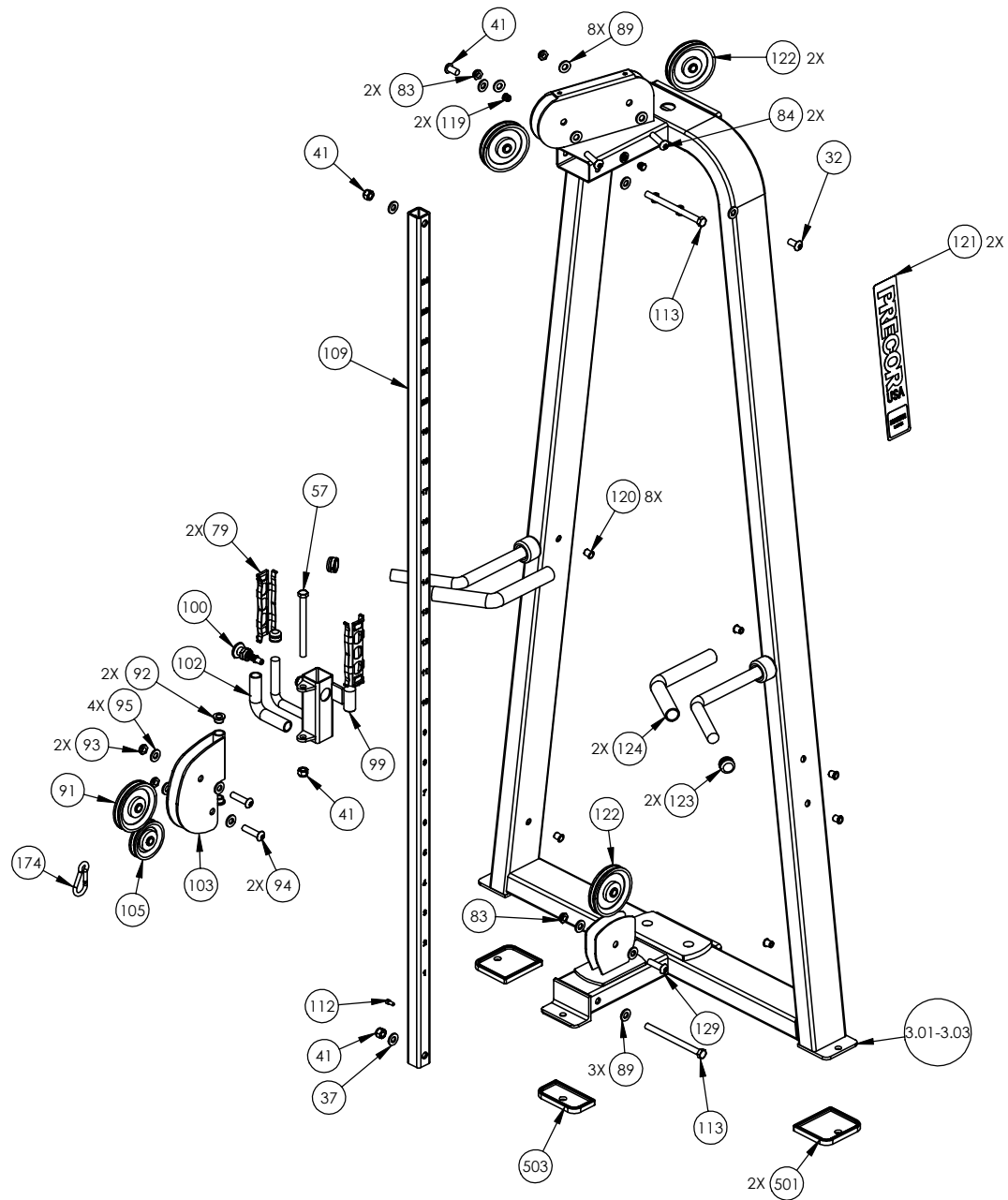
| | |
|------------------|----------------|
| P/N: CW34920-401 | SUBREV: A |
| DRAWN BY: VLE | DATE: 06.24.09 |
| SHEET 2 OF 3 | |



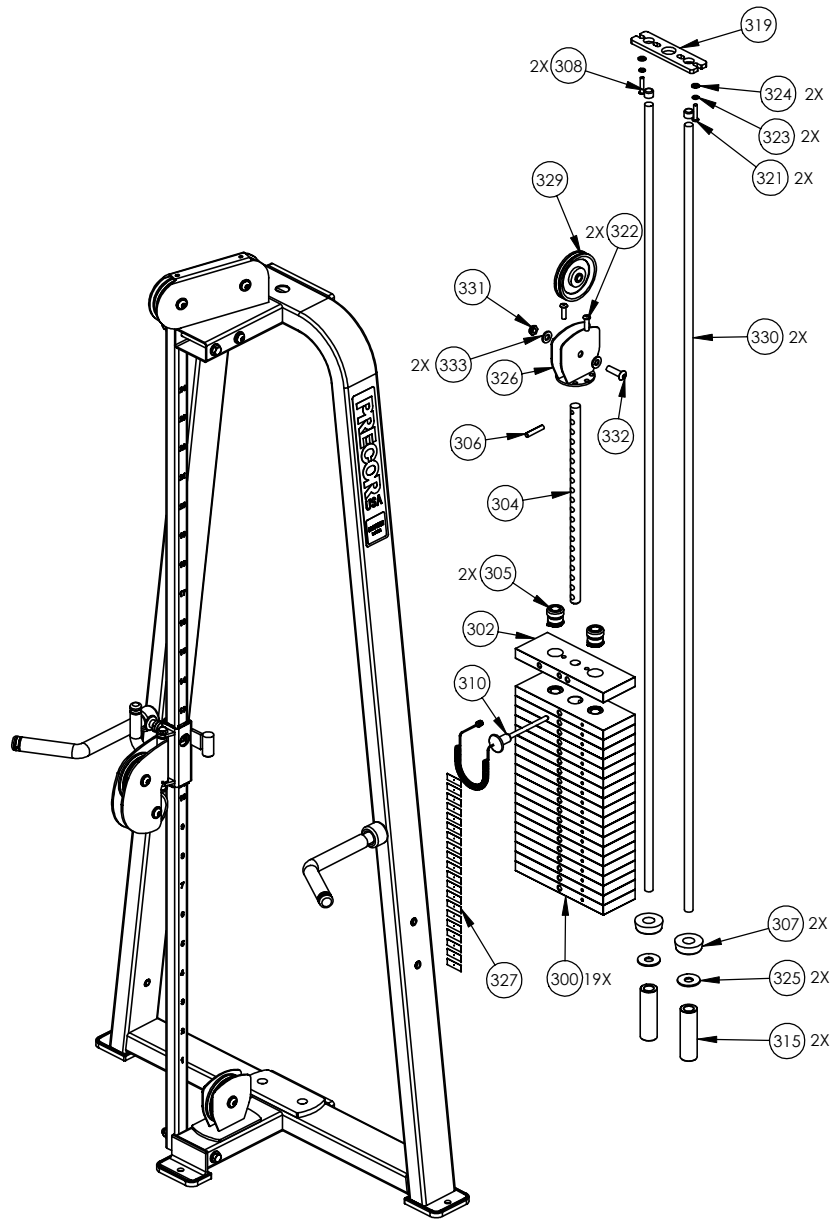
| | |
|------------------|----------------|
| P/N: CW34920-401 | SUBREV: A |
| DRAWN BY: VLE | DATE: 06.24.09 |
| SHEET 3 OF 3 | |



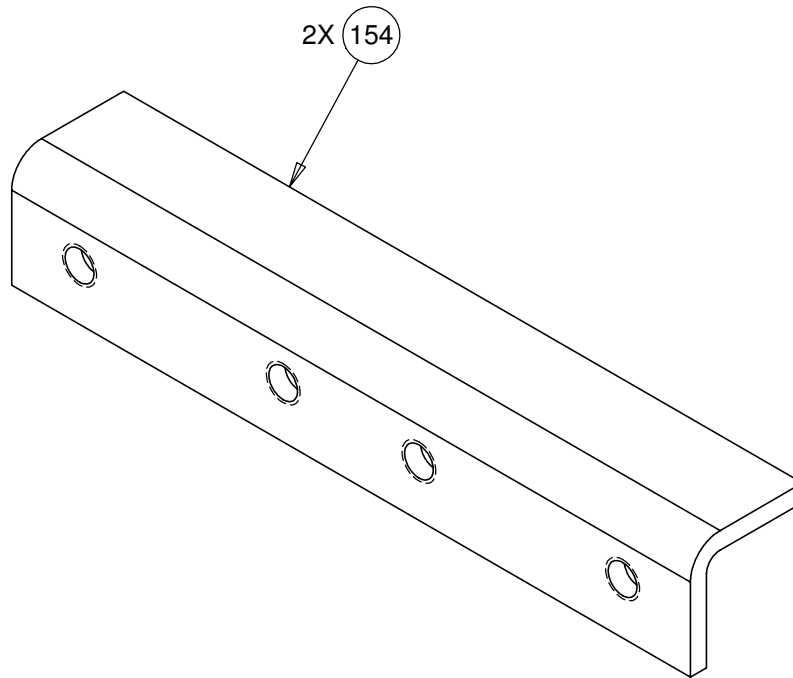
| | |
|------------------|----------------|
| P/N: CW34921-401 | SUBREV: A |
| DRAWN BY: VLE | DATE: 06.24.09 |
| SHEET 1 OF 3 | |



| | |
|------------------|----------------|
| P/N: CW34921-401 | SUBREV: A |
| DRAWN BY: VLE | DATE: 06.24.09 |
| SHEET 2 OF 3 | |



| | |
|------------------|----------------|
| P/N: CW34921-401 | SUBREV: A |
| DRAWN BY: VLE | DATE: 06.24.09 |
| SHEET 3 OF 3 | |



CONFIDENTIAL

THIS DOCUMENT AND INFORMATION CONTAINED HEREIN IS PROPRIETARY AND CONFIDENTIAL TO PRECOR STRENGTH INCORPORATED. RECIPIENTS OF THIS DOCUMENT AGREE THAT THIS DOCUMENT AND INFORMATION WILL NOT BE USED FOR ANY PURPOSE, REPRODUCED OR COPIED, OR DISCLOSED TO ANY THIRD PARTY, EITHER IN WHOLE OR IN PART WITHOUT PRIOR EXPRESS WRITTEN PERMISSION OF PRECOR STRENGTH INCORPORATED.

PRECOR USA
PRECOR STRENGTH, INC.

**28936 AVE WILLIAMS
VALENCIA, CA 91355
TELEPHONE: 661-362-0300**

| | | | | | |
|--------------------------------|----------|-----|---|------|----|
| SIGN IN BLUE OR BLACK INK ONLY | | | UNLESS OTHERWISE SPECIFIED: DIMENSIONS ARE IN INCHES TOLERANCES ARE: LIN .X=±0.1 .XXX=±0.010 LIN .XX=±0.02 .XXXX=±0.0001 ANGULAR: ±1.0° ALL DIMS AFTER PLATING BREAK ALL SHARP EDGES REMOVE ALL BURRS ALL ANGLES & BENDS 90° DWG PER ASME Y14.5M-1994 DO NOT SCALE DRAWING ¹²⁵ ALL MACHINED SURFACES | | |
| DRWN BY | 08.27.09 | VLE | | | |
| DWG CHK | | | | | |
| ENG | 08.27.09 | VLE | | | |
| MFG ENG | | | | | |
| CS | | | | | |
| QA | | | | | |
| ID | | | SIZE | PAGE | OF |
| REG | | | A | 1 | 1 |

PRODUCT:
STRENGTH

STEEL, CHANNEL

DWG. NO. CW33293-402 SUBREV A

2402 Modular, C-Frame , Adj. Hi/Low (3X)

| Part Number | Description | Bubble Number |
|-----------------------|--------------------------------------|----------------------|
| PPP00000CW11311102 | ENDCAP, REC TUBE, 2X4, BLK PLASTIC | 10 |
| PPP00000CW11311103 | ENDCAP, REC TUBE, 2X2, BLK PLASTIC | 11 |
| PPP00000CW30641211 | WELDMENT, THIGH PAD ADJUSTER, SKY WH | 14.01 |
| PPP00000CW30641301 | WELDMENT, THIGH PAD ADJUSTER, CUSTOM | 14.02 |
| PPP00000CW30641321 | WELDMENT, THIGH PAD ADJUSTER, TITANI | 14.03 |
| PPP00000CWGR4804500 | GRIP, RUBBER, .75" OD HANDLE, 4.50" | 16 |
| PPP00000CW30639212 | WELDMENT, PULLDOWN UPRIGHT, SKY WHIT | 18.01 |
| PPP00000CW30640211 | WELDMENT, PULLDOWN SEAT, SKY WHITE | 19.01 |
| PPP00000CWCLRA319250 | ASSY, CABLE, MARINE EYES, FTS, 407B | 20 |
| PPP00000CWTAYN031325 | SCREW, BUTTON HEAD, BLK XYLAN, 5/16 | 21 |
| PPP00000CWPD1105B101 | PAD, 9X17, 4HOLES, W/BP, BLACK | 23.01 |
| PPP00000CWPD1105B102 | PAD, 9X17, 4HOLES, W/BP, RYL BL | 23.02 |
| PPP00000CWPD1105B114 | PAD, 9X17, 4HOLES, W/BP, CUSTOM | 23.14 |
| PPP00000CWWBKN031007 | WASHER, FLAT, TYPE A, SAE, 5/16 ID | 24 |
| PPP00000CWWALYN050013 | WASHER, SPLIT, 1/2 ID, BLK XYLAN | 25 |
| PPP00000CWWALYN031008 | WASHER, SPLIT, 5/16 ID, BL | 27 |
| PPP00000CW12589741 | CARBINE, HOOK, MEDIUM, 5/16" DIA, 3 | 28 |
| PPP00000CWPD1102A101 | PAD, FLAT, 10X36, 4HOLES, BLACK | 30.01 |
| PPP00000CWPD1102A102 | PAD, FLAT, 10X36, 4HOLES, RYL BL | 30.02 |
| PPP00000CWPD1102A114 | PAD, FLAT, 10X36, 4HOLES, CUSTOM | 30.14 |
| PPP00000CWCAYN038100 | SCREW, SOCKET HEAD, BLK XYLAN, 3/ | 31 |
| PPP00000CWWALYN050013 | WASHER, SPLIT, 1/2 ID, BLK XYLAN | 32 |
| PPP00000CWWBKN038007 | WASHER, FLAT, TYPE A, SAE, 3/8 ID | 33 |
| PPP00000CWTAYN050100 | SCREW, BUTTON HEAD, BLK XYLAN, 1/2 | 37 |
| PPP00000CWWBKN050010 | WASHER, FLAT, TYPE A, SAE, 1/2 ID X | 37 |
| PPP00000CWKDYN050059 | LOCKNUT, NYLON INSERT, FULL, UNC, 1 | 41 |
| PPP00000CW30013226 | CUT PIECE, CREPE, 1/4 THICK | 43 |
| PPP00000CWCAYN025050 | SCREW, SOCKET HEAD, BLK XYLAN | 44 |
| PPP00000CW30013131 | CUT PIECE, CREPE, 1/4 THICK | 45 |
| PPP00000CWKAYN050031 | LOCKNUT, NYLON INSERT, HALF, UNC, 1 | 46 |
| PPP00000CWWBKN050010 | WASHER, FLAT, TYPE A, SAE, 1/2 ID X | 47 |
| PPP00000CWKAYN050031 | LOCKNUT, NYLON INSERT, HALF, UNC, 1 | 48 |
| PPP00000CWWALYN050013 | WASHER, SPLIT, 1/2 ID, BLK XYLAN | 49 |
| PPP00000CWGR4620000 | GRIP, RUBBER, 1.00" OD HANDLE, 20.0 | 50 |
| PPP00000CW30245733 | WELDMENT, ADJ. LEVELING FOOT, BLK Z | 52 |
| PPP00000CWTAYN050200 | SCREW, BUTTON HEAD, BLK XYLAN, 1/2 | 56 |
| PPP00000CWAC220901 | HANDLE END CAP W/SET SCREWS, DIA 3/ | 57 |
| PPP00000CWAC218901 | HANDLE END CAP W/SET SCREWS, DIA 1" | 58 |
| PPP00000CWAC219902 | HNDL RETAINER RNG, W/SS, 1.040" I.D. | 59 |
| PPP00000CW30165752 | ASSY, POP PIN, 0.450 DIA NOSE, BLU | 60 |
| PPP00000CWAC1236104 | GUIDE INSERT, PLASTIC WITH HOLE, BL | 61 |
| PPP00000CW33508101 | ASSY, CUT PIECE, ABS CHANNEL, 1/8 X | 63 |
| PPP00000CWAC1010101 | PULLEY, 6 DIA X 1/2 ID | 68 |
| PPP00000CWTAYN031325 | SCREW, BUTTON HEAD, BLK XYLAN, 5/16 | 69 |
| PPP00000CWWALYN031008 | WASHER, SPLIT, 5/16 ID, BL | 70 |
| PPP00000CWTAYN050200 | SCREW, BUTTON HEAD, BLK XYLAN, 1/2 | 71 |
| PPP00000CWWBKN050010 | WASHER, FLAT, TYPE A, SAE, 1/2 ID X | 72 |
| PPP00000CWGR4605000 | GRIP, RUBBER, 1.00" OD HANDLE, 5.00 | 73 |
| PPP00000CWHCYN050500 | SCREW, HEX HEAD, BLK XYLAN, 1/2-13 | 75 |
| PPP00000CWWBKN050010 | WASHER, FLAT, TYPE A, SAE, 1/2 ID X | 76 |

| | | |
|-----------------------|-------------------------------------|--------|
| PPP00CWWALYN038009 | WASHER, SPLIT, 3/8 ID, BLK XYLAN | 77 |
| PPP000CWHCCN050600 | SCREW, HEX HEAD, ZINC, 1/2-13 X 6 | 78 |
| PPP00000CW33626901 | GUIDE, THIN, TELESCOPING TUBE | 79 |
| PPP00CWWALYN050013 | WASHER, SPLIT, 1/2 ID, BLK XYLAN | 80 |
| PPP00000CWAC1010101 | PULLEY, 6 DIA X 1/2 ID | 82 |
| PPP00000CWKAYN050031 | LOCKNUT, NYLON INSERT, HALF, UNC, 1 | 83 |
| PPP00000CWTAYN050200 | SCREW, BUTTON HEAD, BLK XYLAN, 1/2 | 84 |
| PPP00000CWWALYN031008 | WASHER, SPLIT, 5/16 ID, BL | 87 |
| PPP00000CWWBKN031007 | WASHER, FLAT, TYPE A, SAE, 5/16 ID | 88 |
| PPP00000CWWBKN050010 | WASHER, FLAT, TYPE A, SAE, 1/2 ID X | 89 |
| PPP00000CWAC1009101 | PULLEY, 4 1/2 DIA X 1/2 ID | 91 |
| PPP00000CW10433108 | BUSHING,FLNGD,.75ODX.5IDX.5,IGUS R | 92 |
| PPP00000CWKAYN050031 | LOCKNUT, NYLON INSERT, HALF, UNC, 1 | 93 |
| PPP00000CWTAYN050200 | SCREW, BUTTON HEAD, BLK XYLAN, 1/2 | 94 |
| PPP00000CWWBKN050010 | WASHER, FLAT, TYPE A, SAE, 1/2 ID X | 95 |
| PPP00000CWAC218901 | HANDLE END CAP W/SET SCREWS, DIA 1" | 96 |
| PPP00000CW30165752 | ASSY, POP PIN, 0.450 DIA NOSE, BLU | 100 |
| PPP00000CWAC220901 | HANDLE END CAP W/SET SCREWS, DIA 3/ | 101 |
| PPP00000CWGR4806000 | GRIP, RUBBER, .75" OD HANDLE, 6.00" | 102 |
| PPP00000CW30497721 | WELDMENT, W/2 PULLEY WHEELS, WRKL B | 103 |
| PPP00000CWAC1008101 | PULLEY, 3 1/2 DIA. X 1/2 ID | 105 |
| PPP00000CWPF4020713 | TUBE,STEEL,HRPO, 1 1/2 X 1 1/2 X 3/ | 109 |
| PPP00000CWCAYN025050 | SCREW, SOCKET HEAD, BLK XYLAN | 112 |
| PPP00000CWHCCN050600 | SCREW, HEX HEAD, ZINC, 1/2-13 X 6 | 113 |
| PPP00000CW35150101 | ASSY, D- HANDLE | 114 |
| PPP00000CWTAYN031100 | SCREW, BUTTON HEAD, BLK XYLAN, 5/16 | 114 |
| PPP00000CWAC4019101 | ACCESSORY, HANDLE , SINGLE D, SOLID | 115 |
| PPP00000CWEANN050075 | SCREW, SET, SCKT, CUP POINT, 1/2-13 | 117 |
| PPP00000CW11311102 | ENDCAP, REC TUBE, 2X4, BLK PLASTIC | 118 |
| PPP00000CW11382105 | CAP, TUBE, PLASTIC, ROUND, CCF-5/8- | 119 |
| PPP00000CW12537109 | NUT,INSERT,THIN-NUT,LARGE FLANGE | 120 |
| PPP00000CW31756101 | LABEL, PRECOR USA ICARIAN LINE | 121 |
| PPP00000CWAC1009101 | PULLEY, 4 1/2 DIA X 1/2 ID | 122 |
| PPP00000CWAC218901 | HANDLE END CAP W/SET SCREWS, DIA 1" | 123 |
| PPP00000CWGR4612000 | GRIP, RUBBER, 1.00" OD HANDLE, 12.0 | 124 |
| PPP00000CWAC4003101 | ACCESSORY, PRO STYLE BAR, SOLID, 32 | 125 |
| PPP00000CWAC4011101 | ACCESSORY, HANDLE , NYLON ROPE W/BA | 126 |
| PPP00000CWAC4013101 | ACCESSORY, LAT BAR , SOLID, 48" | 127 |
| PPP00000CWSA1081731 | ASSY,LAT BAR,BLK ZNC | 128 |
| PPP00000CWTAYN050100 | SCREW, BUTTON HEAD, BLK XYLAN, 1/2 | 130 |
| PPP00000CWHCYN050275 | SCREW, HEX HEAD, BLK XYLAN, 1/2-13 | 131 |
| PPP00000CWWBKN031007 | WASHER, FLAT, TYPE A, SAE, 5/16 ID | 138 |
| PPP00000CWHCYN050350 | SCREW, HEX HEAD, BLK XYLAN, 1/2-13 | 145 |
| PPP00000CW31887212 | WELDMENT, TOP BEAM, SKY WHITE | 151.01 |
| PPP00000CW31887302 | WELDMENT, TOP BEAM, CUSTOM | 151.02 |
| PPP00000CW31887322 | WELDMENT, TOP BEAM, TITANIUM | 151.03 |
| PPP00000CW31891211 | WELDMENT, UPRIGHT, LONG PULL, SKY W | 152.01 |
| PPP00000CW31891301 | WELDMENT, UPRIGHT, LONG PULL, CUSTO | 152.02 |
| PPP00000CW31891321 | WELDMENT, UPRIGHT, LONG PULL, TITAN | 152.03 |
| PPP00000CW33293733 | STEEL, ANGLE, HR, [3.15 X .25 X 1.6 | 154 |
| PPP00000CWCLGY101125 | ASSY, CABLE, MARINE EYES, 304SM | 155 |
| PPP00000CWCLGY155750 | ASSY, CABLE, MARINE EYES, 302M | 156 |

| | | |
|---------------------|-------------------------------------|--------|
| PPP0000CW11311102 | ENDCAP, REC TUBE, 2X4, BLK PLASTIC | 161 |
| PPP0000CW12537109 | NUT,INSERT,THIN-NUT,LARGE FLANGE | 162 |
| PPP000CWCLRA319250 | ASSY, CABLE, MARINE EYES, FTS,407B | 173 |
| PPP0000CW12589741 | CARBINE, HOOK, MEDIUM, 5/16" DIA, 3 | 174 |
| PPP0000CW33302211 | WELDMENT, BOTTOM BEAM, SKY WHITE | 175.01 |
| PPP0000CW33302301 | WELDMENT, BOTTOM BEAM, CUSTOM | 175.02 |
| PPP0000CW33302321 | WELDMENT, BOTTOM BEAM, TITANIUM, HG | 175.03 |
| PPP0000CW30010102 | LABEL,WARNING STRENGTH | 188 |
| PPP0000CW30011102 | LABEL,WARNING WEIGHT STACK | 189 |
| PPP000CWPD1141J101 | PAD,4X19,2HOLES,W/BP,BLACK, W/SLIP | 191.01 |
| PPP000CWPD1141J102 | PAD,4X19,2HOLES,W/BP,RYL BL, W/SLIP | 191.02 |
| PPP000CWPD1141J114 | PAD,4X19,2HOLES,W/BP,CUSTOM,W/SLIP | 191.14 |
| PPP0000CW31595731 | HANDLE, NARROW GRIP ROW, BLACK ZINC | 192 |
| PPP0000CW31597731 | HANDLE, WIDE GRIP ROW, BLACK ZINC | 193 |
| PPP0000CWAC4020101 | ACCESSORY, HANDLE , DOUBLE D, SOLID | 194 |
| PPP0000CW12589742 | CARBINE, HOOK, LARGE, 3/8" DIA, 3 1 | 199 |
| PPP0000CWAC1133101 | BUSHING, WEIGHT PLATE, LDPE PLASTIC | 203 |
| PPP0000CW10519721 | PLATE, WEIGHT, 20 LBS, WRKL BLK | 279 |
| PPP0000CW10510721 | ASSY, PLATE, WEIGHT, 10 LBS, WRKL B | 300 |
| PPP0000CW10520721 | ASSY, PLATE, WEIGHT, 20 LBS, WRKL B | 301 |
| PPP0000CW30132712 | SELECTOR STEM, 20 PLATE,0.875 DIA, | 304 |
| PPP0000CW30184902 | ASSY,BARREL, TOP PLATE,ALUMINUM | 305 |
| PPP000CWLDNN038200 | SLOTTED PIN SPRING, DIA 3/8 X 2 | 306 |
| PPP0000CW12402101 | BUMPER, ID 1.050, BLK RUBBER | 307 |
| PPP0000CW12404101 | CAP, GUIDE ROD,DIA 3/4, BLK | 308 |
| PPP0000CW33870102 | ASSEMBLY, 5" WEIGHT STACK PIN & LEA | 309 |
| PPP0000CW33870102 | ASSEMBLY, 5" WEIGHT STACK PIN & LEA | 310 |
| PPP0000CW32937101 | WEIGHT STACK LABELS, 10-250, STAGGE | 314 |
| PPP0000CW33323721 | STACK RISER, 5 INCH, WRINKLE BLACK | 315 |
| PPP0000CW32663741 | WELDMENT, BOLT ON TOP PLATE MINI ST | 316 |
| PPP0000CW32938101 | WEIGHT STACK LABELS, 10-300, STAGGE | 318 |
| PPP0000CWPF1016101 | UHMWPE, GUIDE ROD CAPTURE PLATE | 319 |
| PPP0000CWPF1218712 | GUIDE ROD,DIA 3/4, #8,CHM | 320 |
| PPP000CWTAYN031150 | SCREW, BUTTON HEAD, BLK XYLAN, 5/16 | 321 |
| PPP000CWTAYN031175 | SCREW, BUTTON HEAD, BLK XYLAN, 5/16 | 321 |
| PPP000CWCAYN038100 | SCREW, SOCKET HEAD, BLK XYLAN, 3/ | 322 |
| PPP000CWTAYN038125 | SCREW, BUTTON HEAD, BLK XYLAN, 3/8 | 322 |
| PPP000CWWALYN031008 | WASHER, SPLIT, 5/16 ID, BL | 323 |
| PPP000CWWBKN031007 | WASHER, FLAT, TYPE A, SAE, 5/16 ID | 324 |
| PPP000CWWCKN075015 | WASHER, FLAT, TYPE A, WIDE, 3/4 ID | 325 |
| PPP0000CW32651721 | WELDMENT, 4.50" TOP PLATE PULLEY HO | 326 |
| PPP0000CWAC1009101 | PULLEY, 4 1/2 DIA X 1/2 ID | 329 |
| PPP0000CWPF1218712 | GUIDE ROD,DIA 3/4, #8,CHM | 330 |
| PPP0000CWKAYN050031 | LOCKNUT, NYLON INSERT, HALF, UNC, 1 | 331 |
| PPP000CWTAYN050175 | SCREW, BUTTON HEAD, BLK XYLAN, 1/2 | 332 |
| PPP000CWWBKN050010 | WASHER, FLAT, TYPE A, SAE, 1/2 ID X | 333 |
| PPP0000CWAC1177101 | FLOOR PROTECTOR, RUBBER, 4.563 X 4. | 501 |
| PPP0000CWAC1178101 | FLOOR PROTECTOR, RUBBER, 2.563 X 6. | 502 |
| PPP0000CWAC1179101 | FLOOR PROTECTOR, RUBBER, 4.813 X 2. | 503 |
| PPP0000CWAC1180101 | FLOOR PROTECTOR, RUBBER, 2.563 X 4. | 504 |
| PPP0000CWAC1181101 | FLOOR PROTECTOR, RUBBER, 4.563 X 4. | 505 |
| PPP0000CW58004101 | WEIGHT STACK BUSHING KIT, KS SERIES | 600 |